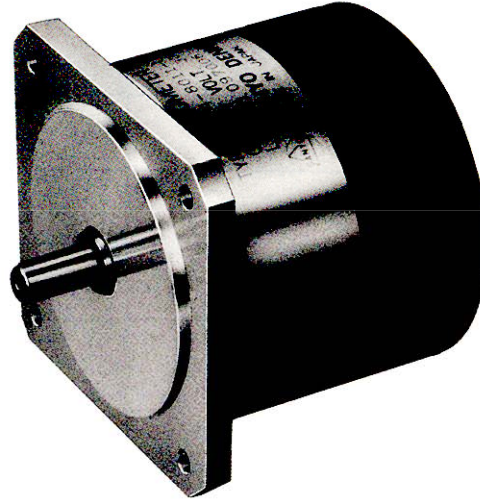


# DC TACHOMETER GENERATOR

## COMPACT & LOW-RIPPLE NEW TACHO-GENERATOR



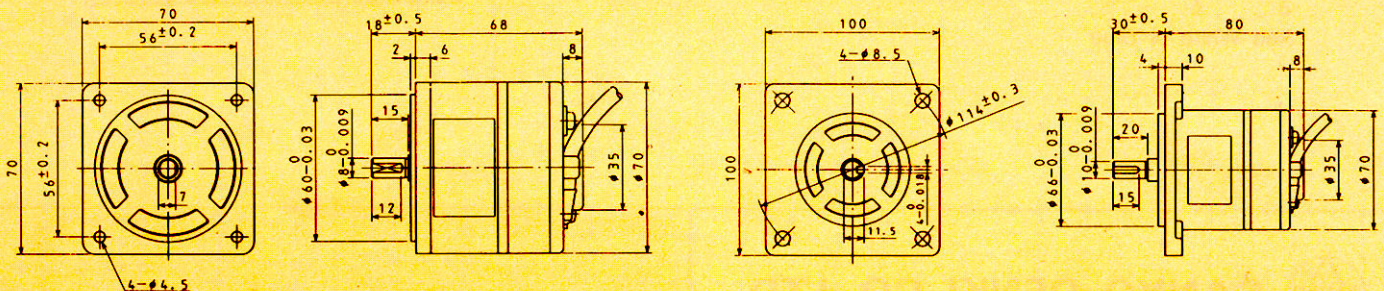
DC Tachometer Generator, for various applications to detect and indicate rotation speed and feedback of each control equipment, has been developed through SANYO DENKI's rich experiences and research for many years.

It is widely used for speed and position control and numerical control of machinery for various fields such as computer peripherals, measuring devices and machine tools.

These models have excellent performance of linearity in wide range, low ripple voltage and high efficiency by selecting the best materials for ball bearings, permanens magnets and brushes.

### NOTEWORTHLY POINTS

- **Excellent Linearity**  
Excellent in linearity over wide range from ultra low speed.
- **Remarkably low ripple voltage**  
The ripple voltage (rms and p-p value) is kept remarkably low by selecting special brush materials and increasing slot numbers.
- **Minimum Thermal Drift**  
Magnet materials and machining procedures have been carefully selected and/or examined to minimize thermal drift and keep linear output.
- **Compact and Light Weight**  
Reduced the weight and shortened the length remarkably compared with conventional model, in order to save space in applications.



104-8012-1(104-8011-1)

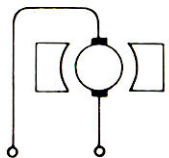
104-9011-1

# DC TACHOMETER GENERATOR

## CHARACTERISTICS

MODEL NO.		104-8012-1	104-8011-1	104-9011-1
CHARACTERISTICS				
Output Voltage	(V/1000r.p.m.)	$7 \pm 10\%$	$30_{-0}^{+10}$	$60_{-0}^{+10}$
Maximum Speed	(r.p.m.)	4,000	4,000	4,000
Linearity	(% max.)	1	1	1
P-P Ripple	(% max.)	1	1	1
Rms Ripple	(% max.)	0.5	0.5	0.5
Bidirectional Error	(% max.)	1.0	1.0	1.0
Internal Impedance • DC Resistance	( $\Omega$ )	25	200	260
Internal Impedance Inductance	(mH)	5	100	140
Rotor Inertia	(g-cm <sup>2</sup> )	470	470	800
Friction Torque	(g-cm)	150	150	250
Maximum Current	(mA)	50	50	50
Output Thermal Coefficient	(%/°C)	0.04	0.04	0.04
Weight	(g)	0.8K	0.8K	1.0K

### INTERNAL CONNECTION

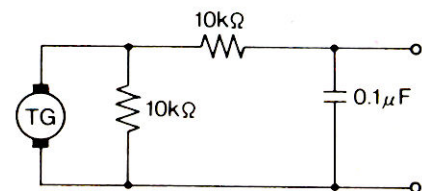


Red White or Blue

#### \* POLARITY

When TG rotates in counterclockwise as viewed from the shaft end, polarity is positive (+) on terminal 1 or red, and negative (-) on terminal 2 or white.

### TEST LOAD FILTER



**SANYO DENKI CO., LTD.**

15-1, KITAOKITSUKA 1-CHOME, TOSHIMA-KU, TOKYO 170, JAPAN  
 TEL: TOKYO (03) 917-5151 FAX: (03) 918-5206  
 TELEX: 2722176 SANYO T J